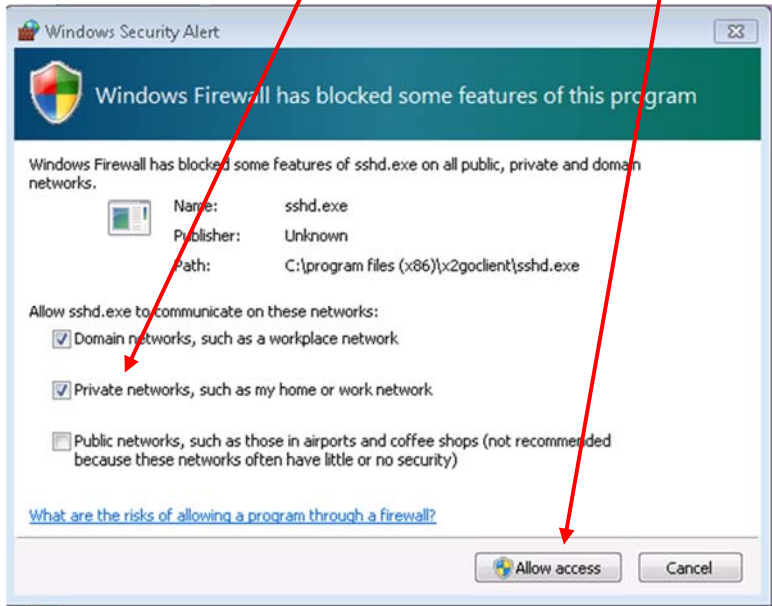


X2GoClient Configuration for XStata, RStudio and Matlab Instruction

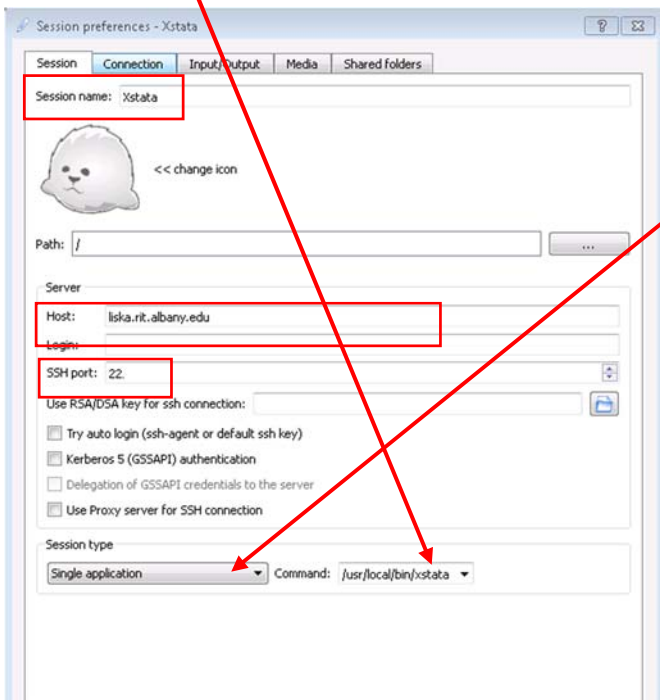
1. Download X2Go from <http://wiki.x2go.org/doku.php/download:start>
2. Pick X2Go Client and proper operating system (mswin versus macosx)
3. Save file and install the downloaded file
4. Use the default options during the installation process. Once the installation is complete, locate the X2Go Client icon on the desktop



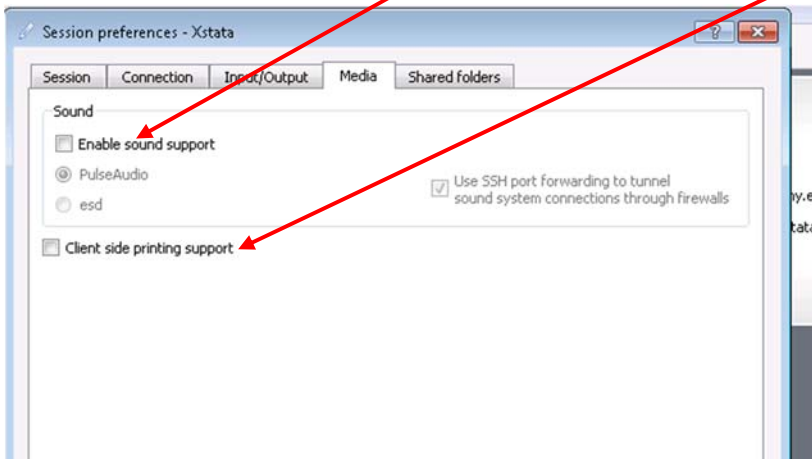
5. Check the box for "Private Networks" and click "Allow Access" when the "Windows Firewall Alerts" window pops up.



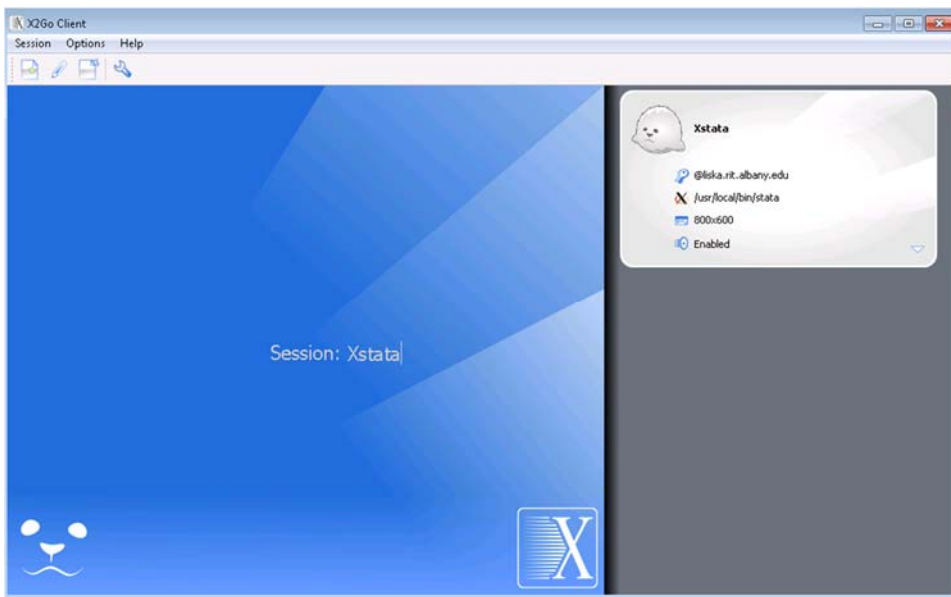
6. Configuration for a new session. Enter Xstata as the Session name box, liska.rit.albany.edu at the host name box, your netid at Login box, 22 at the SSH port box, use the drop down menu to select "Single application" at the Session type and enter /usr/local/bin/xstata at Command box. Click OK.



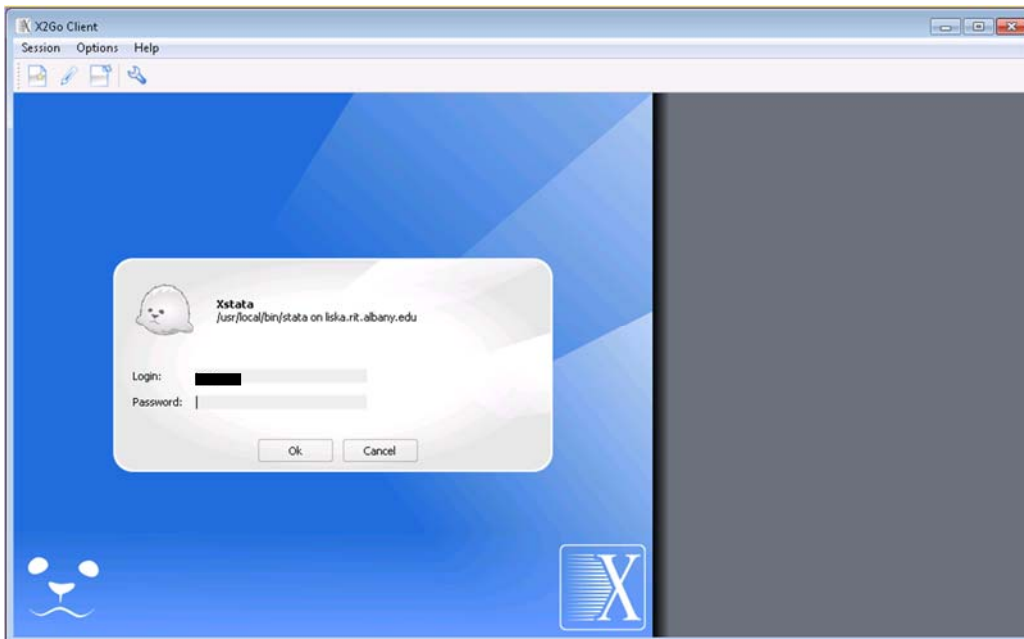
7. Under the media tab, uncheck "Enable sound Support" and "Client side printing support." Click OK.



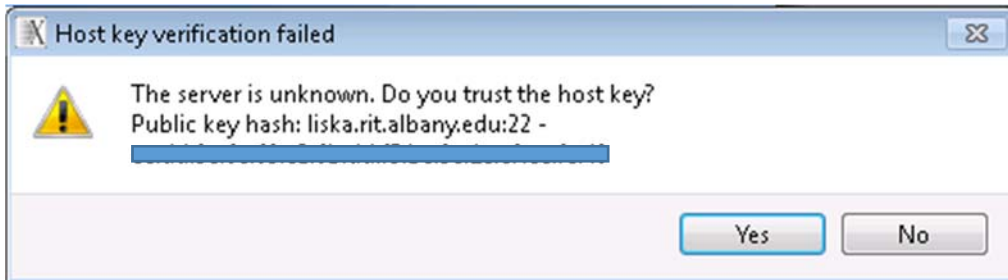
8. Click the Xstata session at the right hand side panel.



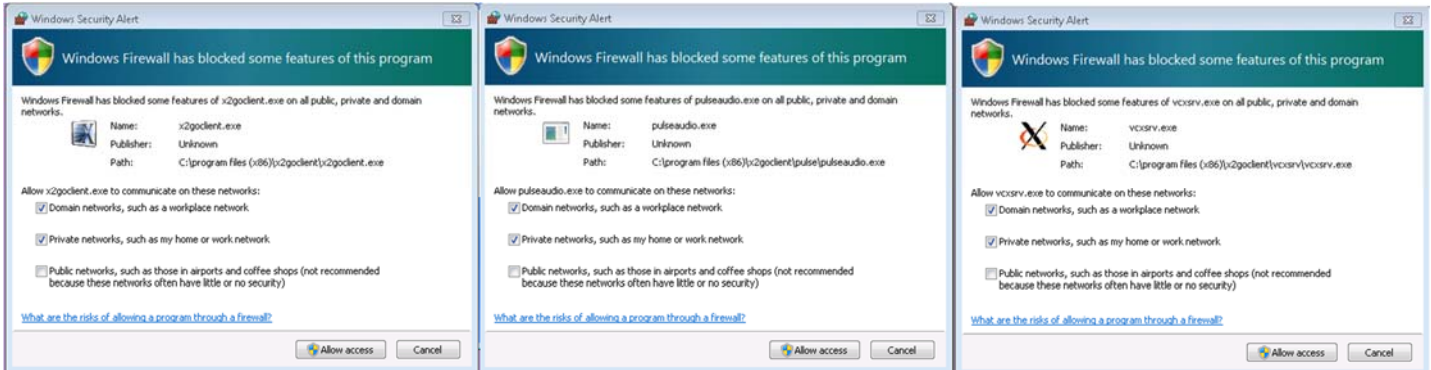
9. Enter password



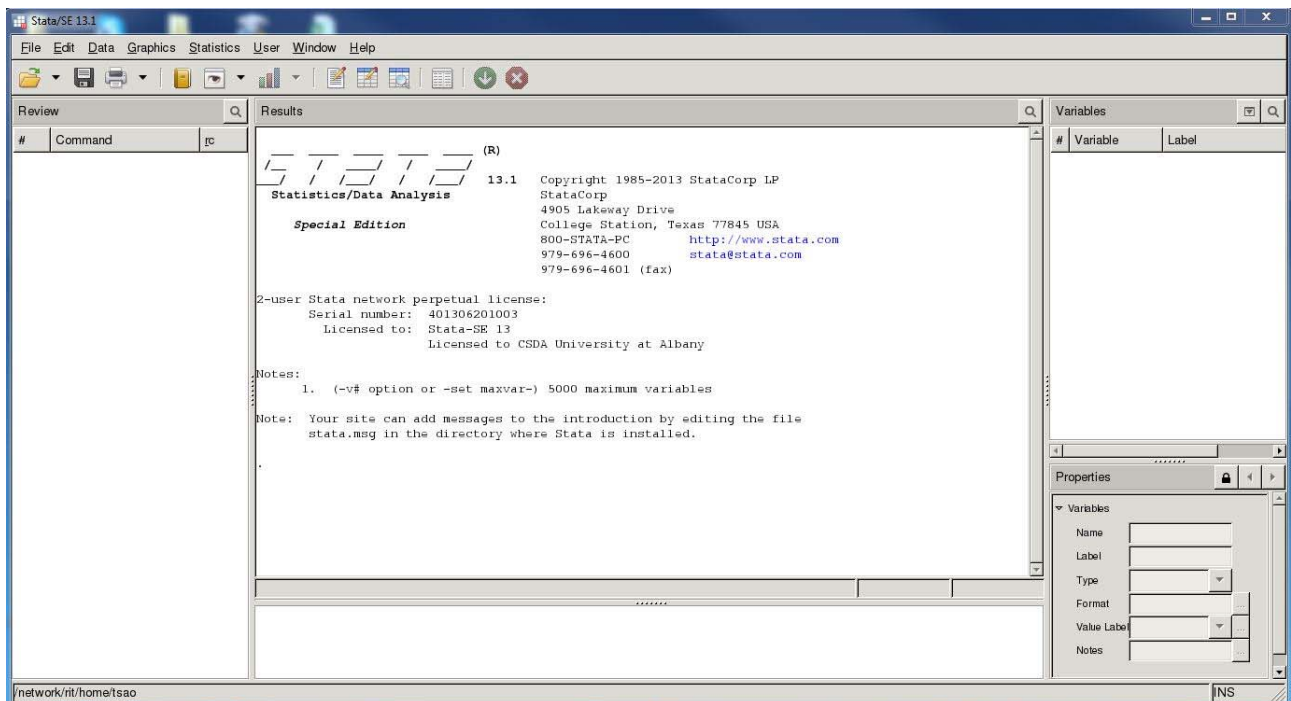
10. Click "Yes" to Host Key Verification



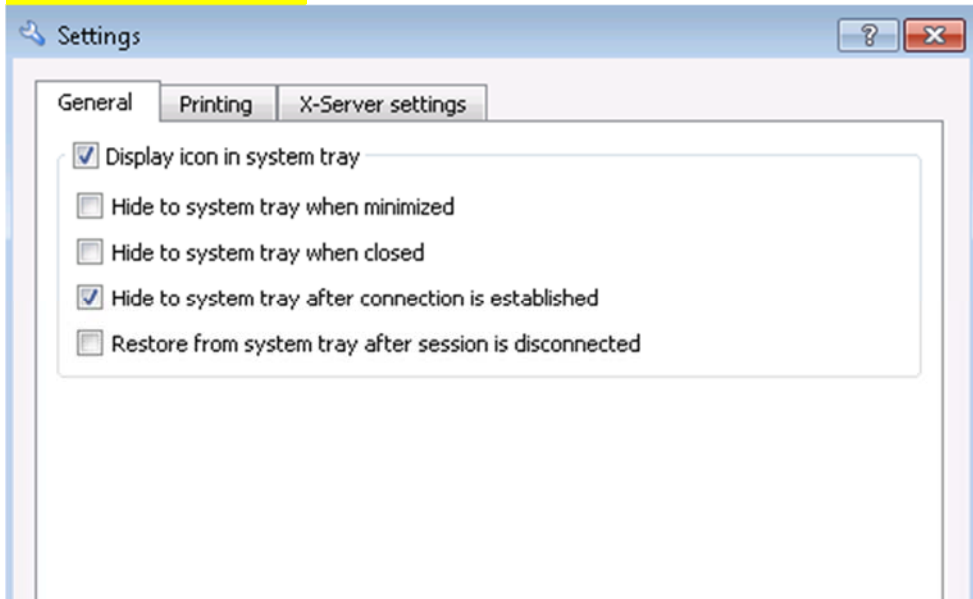
11. Check the box of "Private Networks, such as my home or work network" at each Windows Security Alert and click "Accept access."



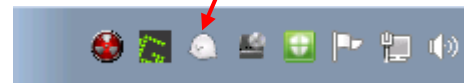
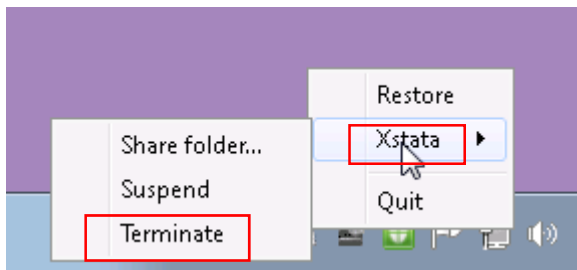
12. Once the connection is established, you should see Xstata running on CSDA's server as one of your desktop applications.



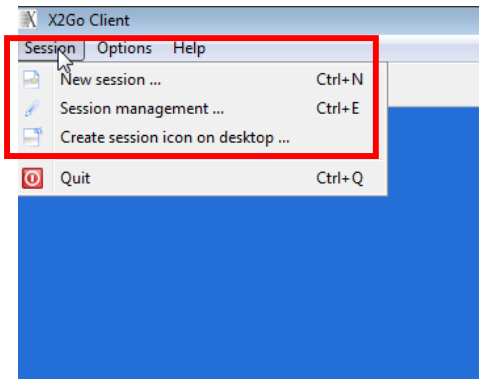
13. Click “Settings” under Options, at the “General” tab, check “Display icon in system tray” and “Hide system tray after connection is established”.



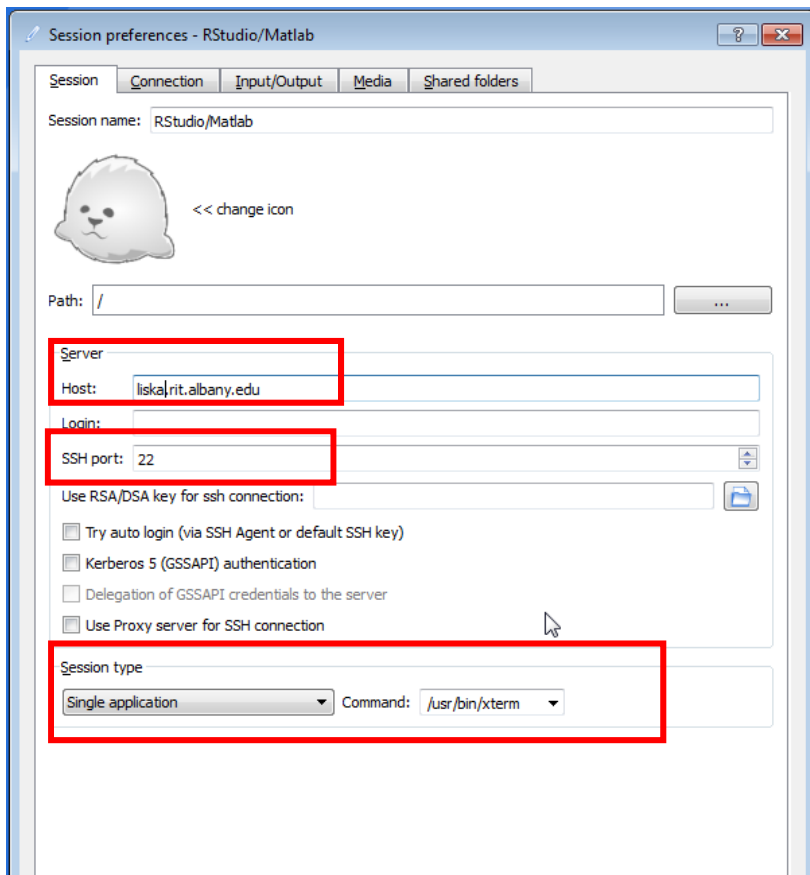
14. Note that currently CSDA only has a 2-user network Stata license, it's important to terminate the Xstata session when no longer in use. Users should type **exit** at the Xstata command line, locate the **session icon** at the taskbar, and click **Xstata** and **Terminate** to properly exit Xstata session from the server.



To configure settings for RStudio or Matlab, go to “Session” and create a “New session.”



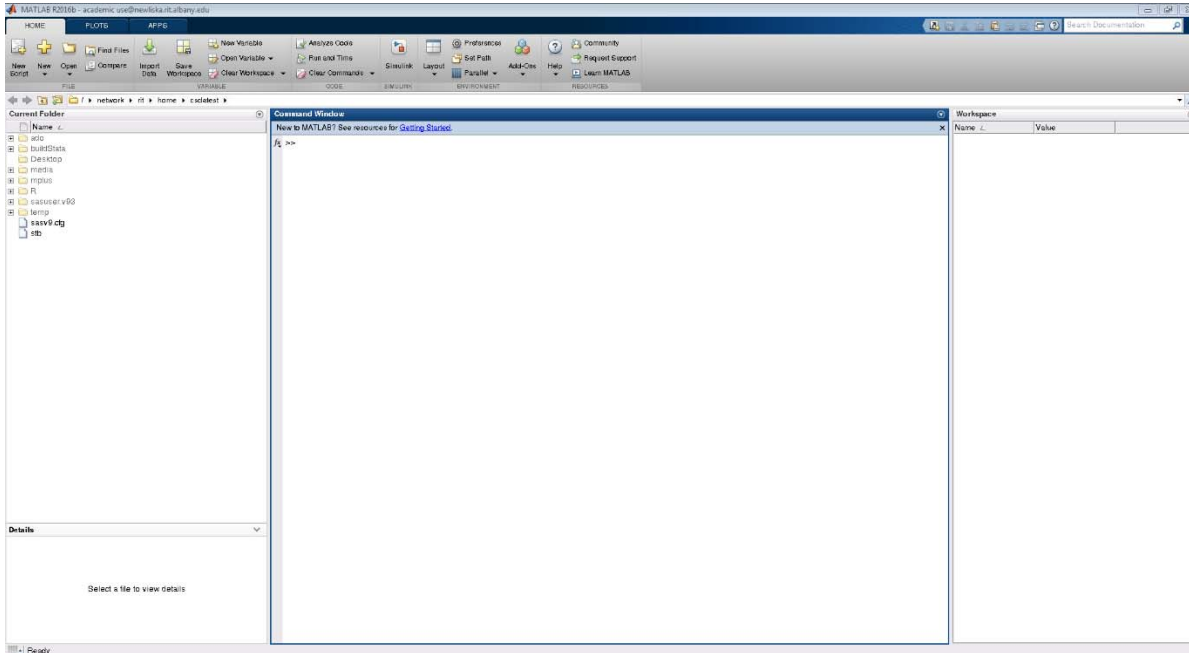
Enter Host: **liska.rit.albany.edu**, SSH port: **22**, Session type “**Single application**” and Command: **/usr/bin/xterm**. Click OK to save the configuration.



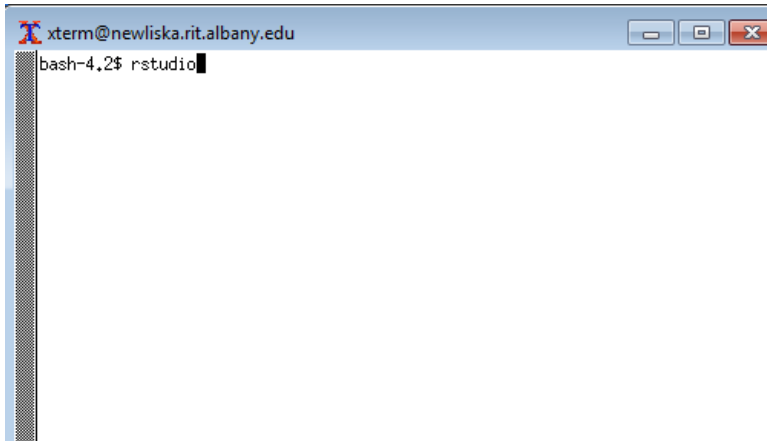
Click the session you just configure and enter the login and password. Once it's connected to the server, an xterm window will prompt, then enter **matlab** at the prompt.



Matlab running on Liska is ready to use from user's desktop. Note that the default directory is user's home directory located on the RIT's cluster.



To access RStudio, enter **rstudio** at the prompt from xterm session.



RStudio running on Liska is ready to use from user's desktop.

